



Pleion Prefab

Homebuilding Options
Feb. 2022

Powered by



BETTER
Prefab



FASTER
Prefab



COST-EFFECTIVE
Prefab

Problem: Undersupply of Millions of Homes

Causes:

- Lagging Productivity
- Labor Shortage
- Financially-strained Municipalities

Consequences:

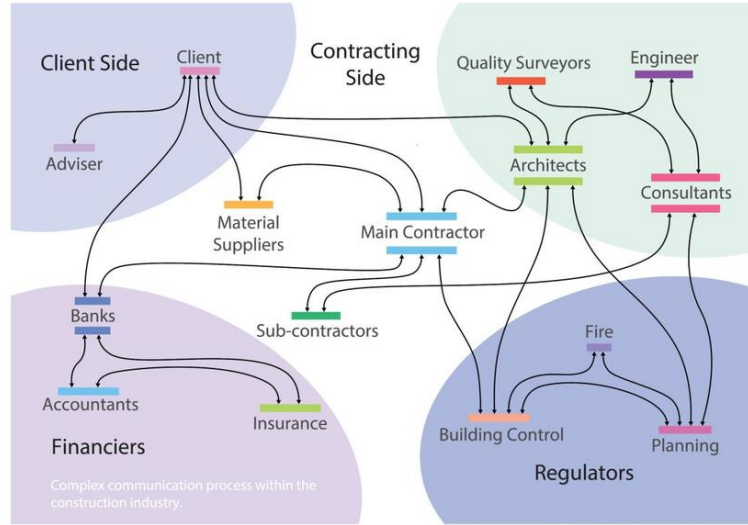
- Inadequate Supply
- Rising Prices
- Cookie-cutter designs



Pain Points: We need to Build More Homes... **...BUT Construction is Complex & Error-prone**



Black Box



Broken Process

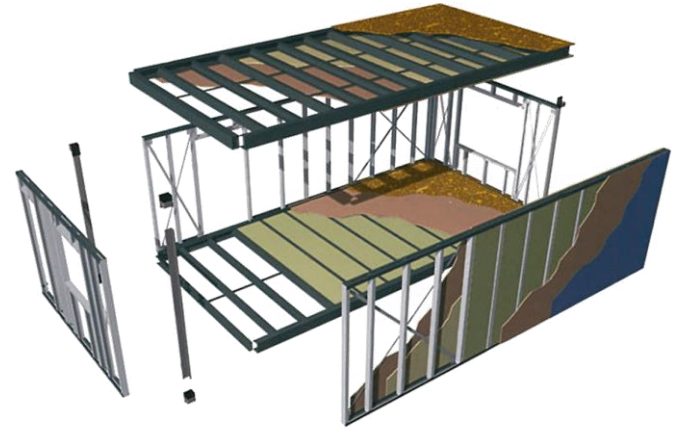



Costly Mistakes

The Solution: Prefab Construction

Yes: Prefab > Site-built Construction

- o reduces: time, cost, labor & waste
- o increases: quality, efficiency & safety



But:  **> Conventional Prefab**



BETTER
Prefab



FASTER
Prefab



COST-EFFECTIVE
Prefab

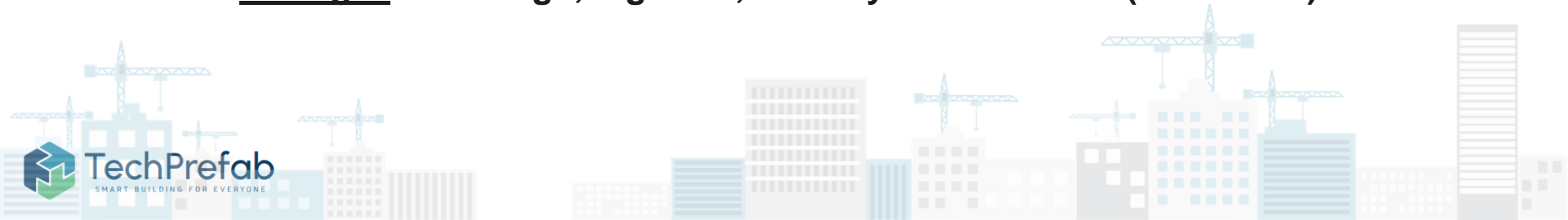
How: Pleion Prefab Optimizes Prefab Construction

A better, faster & more cost-effective way to design & build for our clients:

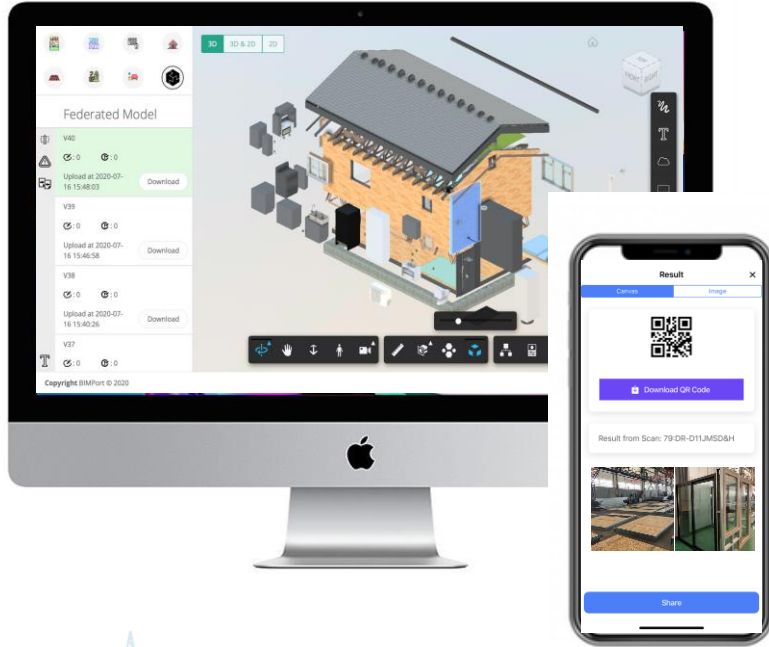
- B-B: landowners, homebuilders, commercial developers & end-users**
- B-C: homebuyers**

For each client/project, powered by TechPrefab, Pleion:

- identifies the best prefab building systems & materials for each project**
- sources them from our curated, global supply chain**
- manages the design, logistics, delivery & installation (as needed)**



Better: BIMport™ Proprietary, Cloud-Based Platform



Features & Benefits

1. Team Collaboration



Project members shared platform

- eliminates design & construction errors
- reduces costs

2. Component Database



Powered by BIM
(Building Information Model)
3D product database with certified
manufacturer's specs & pricing

- faster design
- cost transparency

3. Off-Site Construction



Interface & monitor all
stages with factory

- increased transparency
- more efficient scheduling

4. On-Site Assembly



Provide visual instructions
for flow of construction

- simplifies contractor tasks
- Improves safety, quality & productivity

Cost Effective: Apple Model = Low Capex

Global Reach

- Instead, we have relationships with factories in the US & Asia.
- BIMport helps identify global capacity & find the right system (steel, wood etc..)
- This allows us to focus on:
 - Product design
 - Client service
 - Market Penetration & Growth
 - Sustainable, renewable materials used as efficiently as can be. This is the future of construction.



#1 - Steel System: 1 Minute Demo – Fast Installation using pre-cut Light Gauge Steel (LGS) panels



#2 Concrete Systems: Many Systems



Blocks



Precast Panels



Removable Forms



Insulating Concrete Forms (ICF)



3D Printing

#3 Wood & Engineered Wood Systems Light Wood, Mass Timber, Cross Laminated Timber (CLT) etc..



Platform



Balloon



Founding Team: Complementary Skills, Strong Chemistry & Intense Work Ethic



Robert Friedman
CEO & Co-Founder



- 25+ years Experience in Technology, Real Estate & Finance
- President, CFO - TTR Technologies IPO / acquired by Rovi Corp



Weili Xu
CTO & Co-Founder



- Ph.D.-Building Performance & Diagnostics
- 10 years Project Management Experience



Zheng Zhang
COO & Co-Founder



- MBA & MSIS Dual Degree
- 10 years Development Experience



Tiberias
Capital

TOSHIBA



Senior Management: Design & Procurement



Yao Dong
Chief Architect



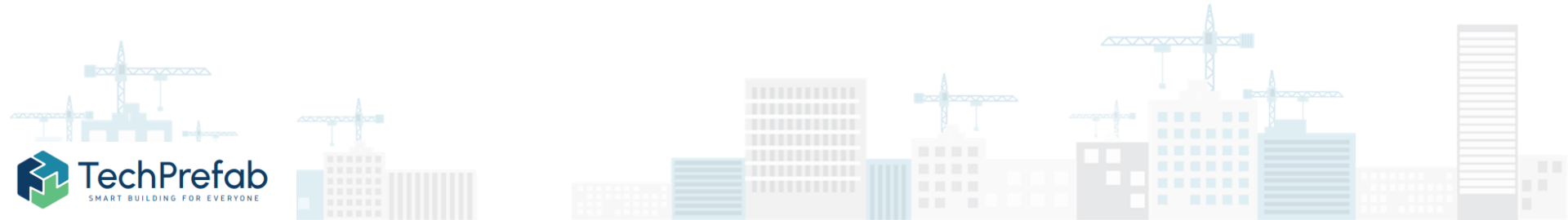
- M. Arch of Urban Design, Harvard University
- 7 Years of experience, Kohn Pedersen Fox Associates (KPF)

KPF



William Guan
General Manager, China Office

- Expert in Supply Chain, International Logistic Management & E-commerce
- 10 Years of experience in Hardware Manufacturing



Pleion Prefab



BETTER
Prefab



FASTER
Prefab



COST-EFFECTIVE
Prefab



rf@techprefab.com



(646) 719-0273



www.techprefab.com