

Finance  
Design  
Build

A Proactive Approach to  
Guyana's Road Infrastructure

**AnyWay**<sup>TM</sup>

**Pleion** Inc. 

The background of the slide features the national flag of Guyana, which is a large triangular flag with a red upper triangle, a green lower triangle, and a black diagonal stripe separating them. A white border runs along the edges of the flag. The flag is flying on a tall silver pole against a dark, overcast sky. The text "Guyana's National Development Strategy" is overlaid on the left side of the flag in a white, sans-serif font.

# Guyana's National Development Strategy

## Constraints to Guyana's Development

- The roads of Guyana are mostly classified as 'very poor'.
- There are very few permanent roads in the hinterland of the country.
- Of the existing road network of just over 1,600 miles, only 19 percent comprises primary roads, while 21 percent consists of feeder roads which link coastal agricultural areas to the primary road network.

The gross inadequacy of the transport system prevents social and economic development in several ways:

- Increases production costs and, therefore, reduces competitiveness, particularly in mining and forestry;
- It inhibits capacity to access natural resources (gold, timber, diamonds, soils suitable for agriculture) that are not located on the coastland; and
- Creates a physical divide between coastal communities and the interior of the country

Transport (122nd)	Source	Unit	Value			Global Rank	
			2009	10-yr trend	2019	2009	2019
Quality of roads	WEF	expert survey, 1-7	2.6		2.6	143	143
Road density	FAO	km per 100 sq km of land area	3.7		3.7	147	146

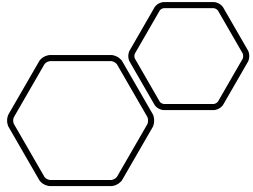
Two key transport/road indicators highlight that better road infrastructure is critical to Guyana reaching its economic potential

# Delivery is the Name of the Game

- Guyana's poor pavement infrastructure is restricting economic growth
- With the latest discovery of the largest oil discovery globally the Government of Guyana will have the capacity to MAKE A CHANGE!
- Change the lives of the people of Guyana through significant and focused upgrading of the country's road infrastructure.
- While significant funds are expected, infrastructure development is lagging and needs to be addressed proactively now.
- Together, AnyWay and Pleion, offer the government to take a proactive approach to improve the quality of paved roads, upgrade unsurfaced roads to surfaced roads, and further develop links between coastal communicates and the interior
- A Finance-Design-Build package which is all based on local construction force will allow delivery of projects, now.

**AnyWay**<sup>TM</sup>

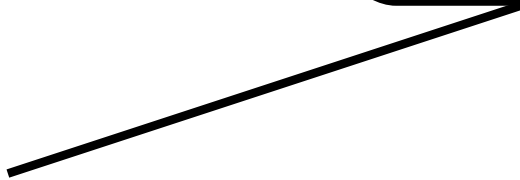




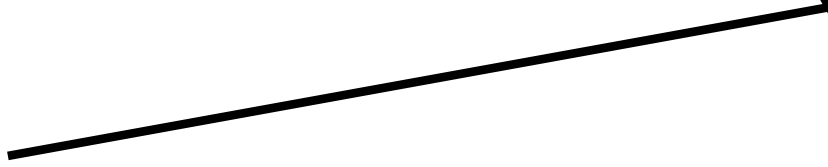
Finance



Design



Build



Pleion Inc.



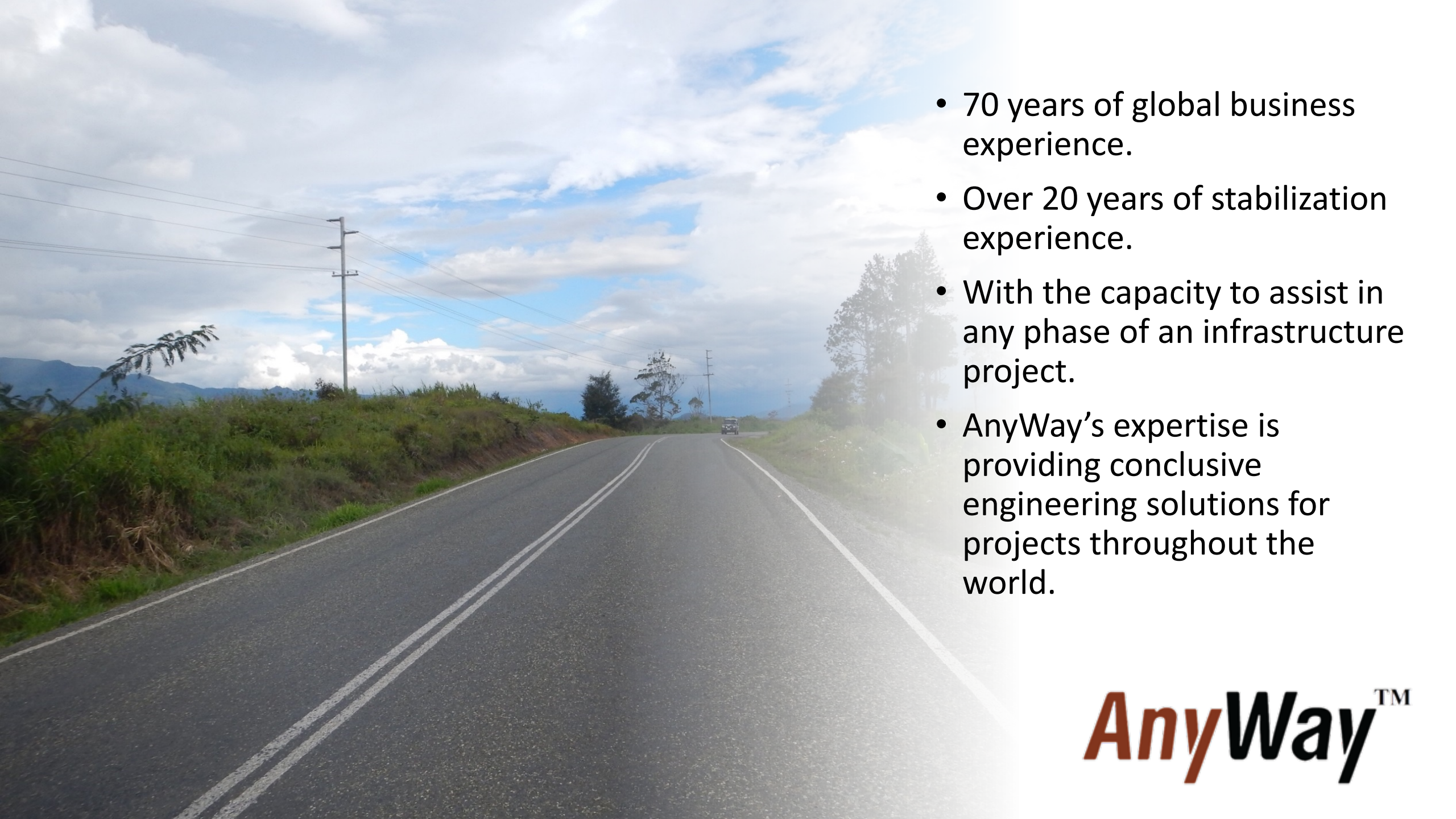
# Synergistic Capacity

**AnyWay**<sup>TM</sup>

- 70 years of global business experience
- Over 20 years of direct stabilization experience
- Have capacity to assist with any phase of a transport project
- Commitment to success from the start to end of a project lifecycle
- Implement leading edge technologies and techniques through all phases of work
- Professional technology-driven solutions
- Multinational team of experts
- Experience in dealing with a wide variety of challenging projects in challenging conditions
- Access to project funding

**Pleion** Inc. 

- A Guyanese-based consortium of construction, financing, architectural, marketing & sales, and property development companies joining together to create the “Gateway to Guyana” project.
- Three pillars:
  - Infrastructure development
  - Residential development
  - Real Estate
- Pleion is building the next generation of sustainable communities – a hybrid of physical and digital neighborhoods within cities.
- It is a unique combination of real estate, technology, programming and services that meets the full scope needs of the individual and the community.
- Pleion is passionate about collaboration, connection, communication, and compassion



- 70 years of global business experience.
- Over 20 years of stabilization experience.
- With the capacity to assist in any phase of an infrastructure project.
- AnyWay's expertise is providing conclusive engineering solutions for projects throughout the world.

**AnyWay**<sup>TM</sup>

A topographic map of a region, likely a mountainous area, with a color gradient from green to red indicating elevation. A yellow line highlights a specific path or route across the terrain. Several labels are visible on the map, including 'Pungoy Blac' on the right edge, 'San Isidro Labrador Chapel' in the lower right, and 'Art Tary' in the lower center. The text 'AnyWay Project Experience' is overlaid in the center of the map.

# AnyWay Project Experience



Design and rehabilitation of runway pavements



Inter-urban pavement design and upgrading

Solutions to  
upgrading  
unsealed feeder  
roads to sealed  
roads





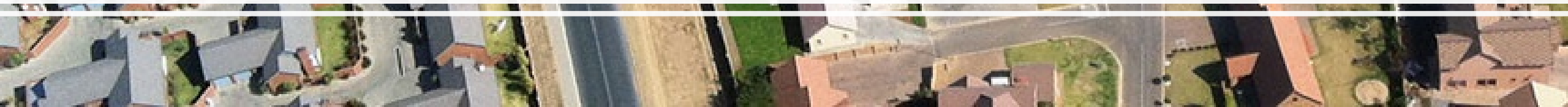
## Low Volume Road Design

Upgrading urban and inter-urban roads through optimized rigid pavement design and base stabilization



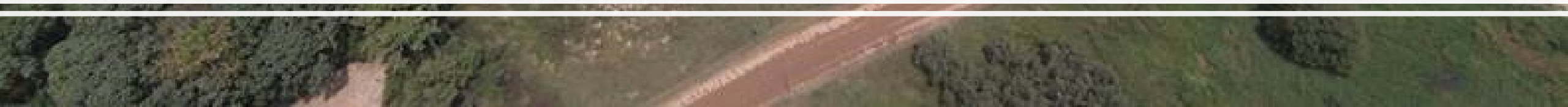


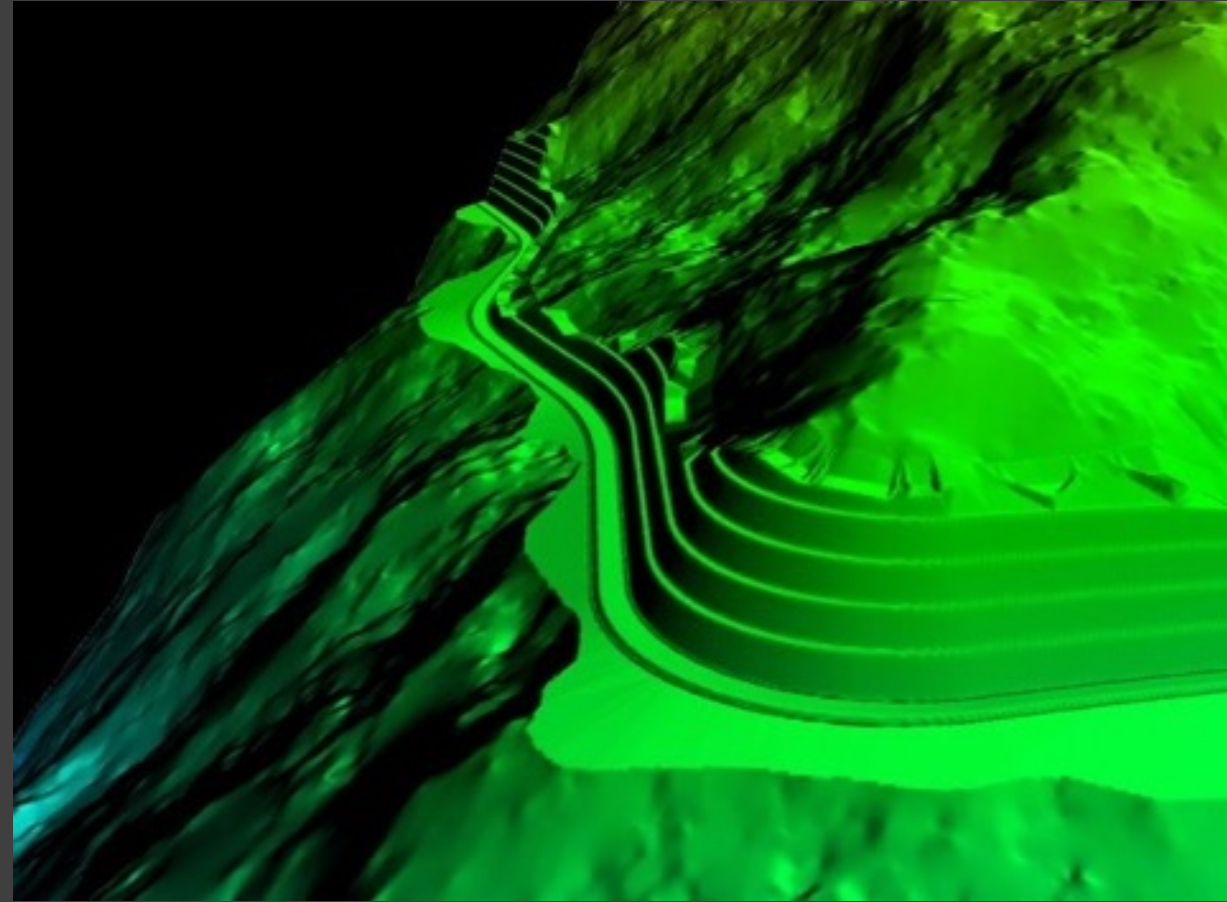
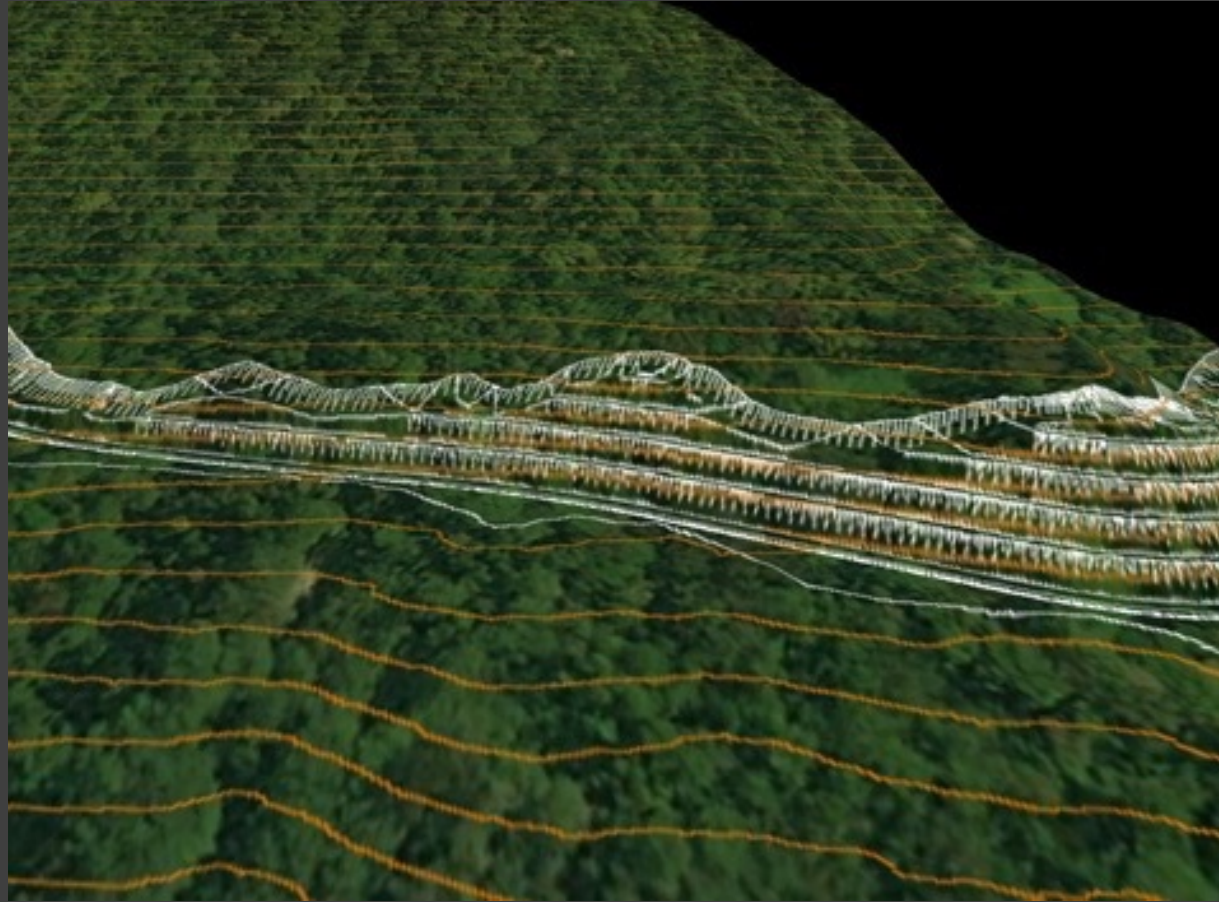
Development planning and urban roads





Pavement solutions for complex projects





Advanced satellite technology for road surveys

**AnyWay**<sup>TM</sup>





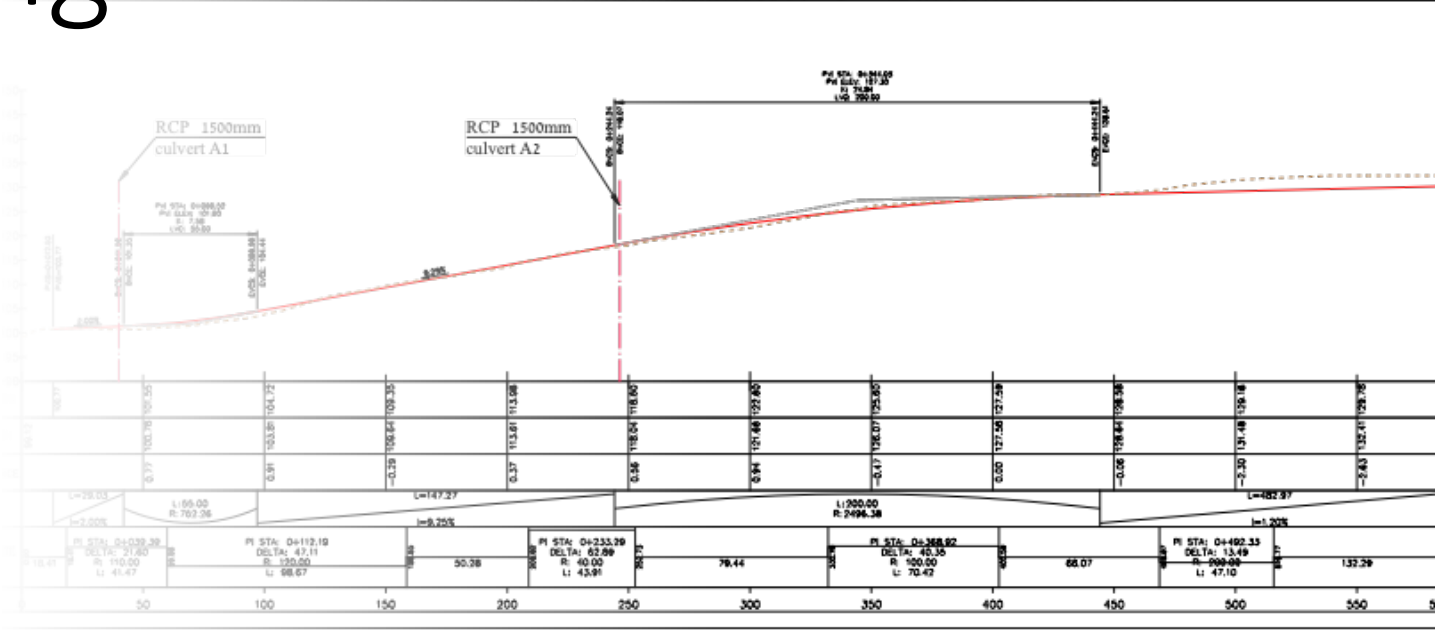
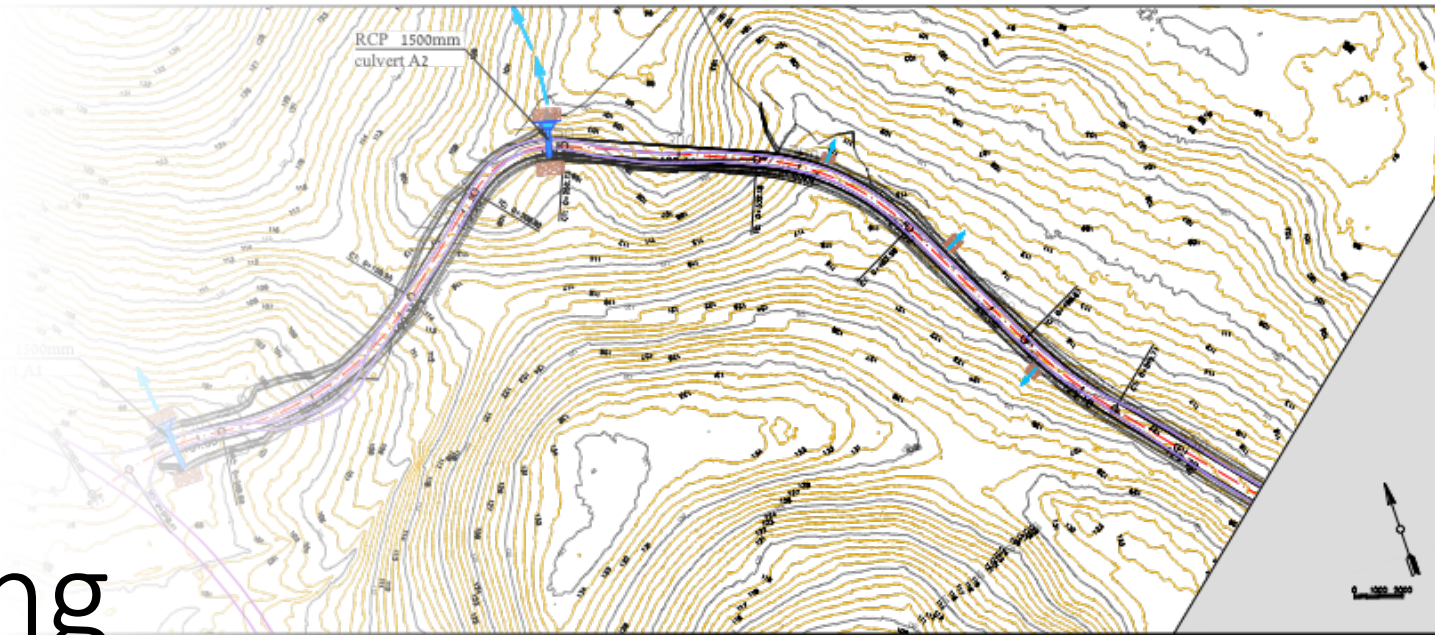
# Pavement Distress Surveys

**AnyWay**<sup>TM</sup>



Design of mining haul roads

# Detailed Engineering Design



General Notes

No.	Revision/Issue	Date

Designed for:

Note: The contractor is responsible for all the measurements. The contractor must inform the planner immediately if any deviation is found. Measuring by scale is not permitted.

Project Name  
Route 4  
Chainage 0 - 584  
M-11W-1003-006-part1-001  
Part 1 - layout and profile

For approval:  For amend:  For issue:

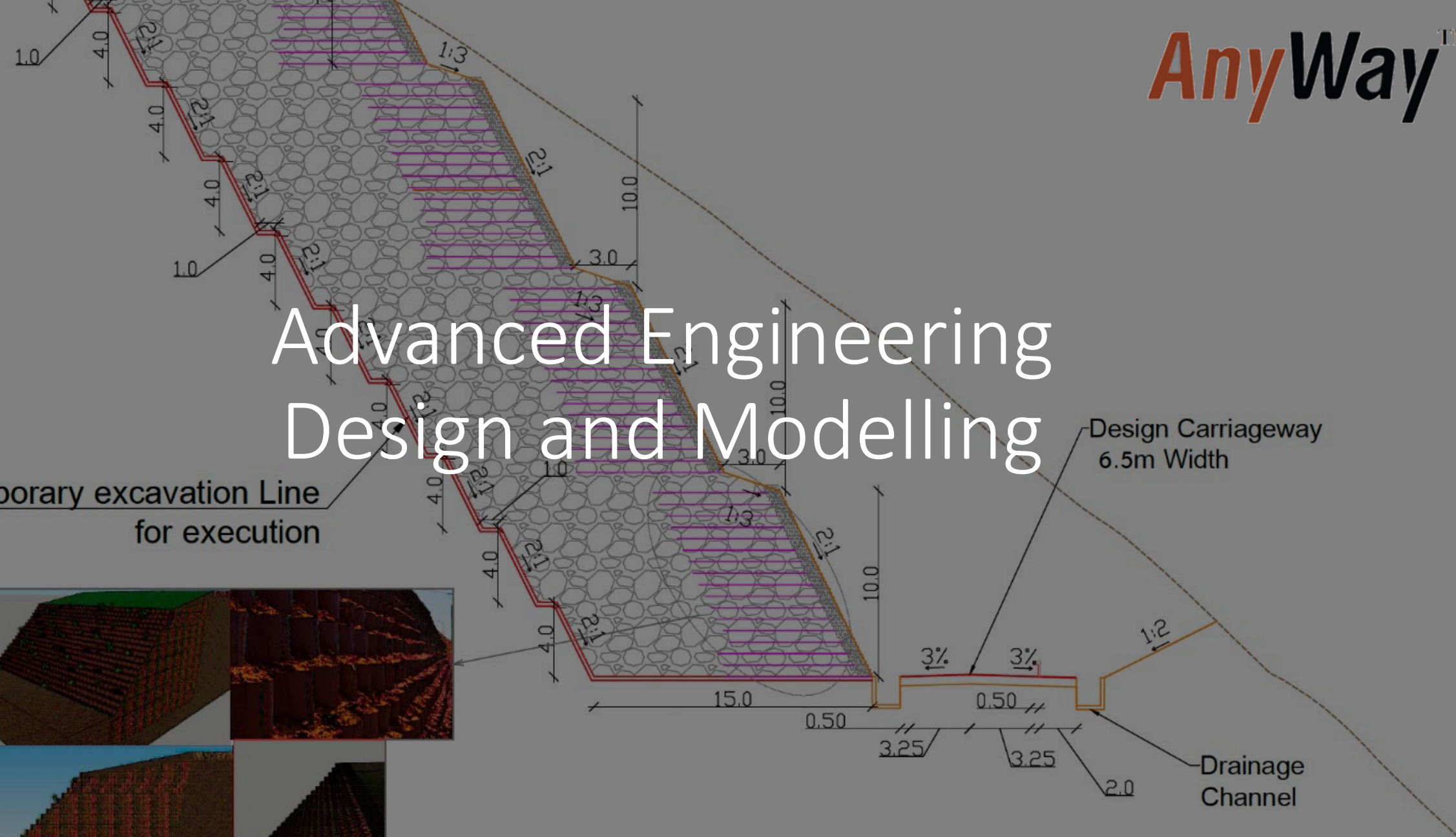
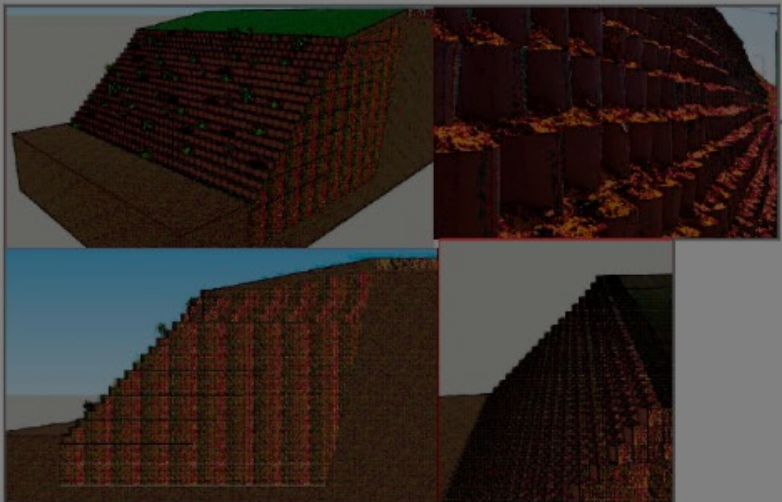
Project Route 4	Sheet 1
Date 21.04.2021	
Scale 1:2000, 1:2000/1000	


# Advanced Engineering Design and Modelling

Temporary excavation Line for execution

Design Carriageway 6.5m Width

Drainage Channel





An  
Optimized  
Solution

---

Finance facilitation with the support  
of the Government of Israel

---

Provide complete project design  
services from A to Z

---

100% employment of local  
construction force

---

Capacity building of local workforce,  
engineers and contractors

## Possible finance facilitation conditions

Facility amount – up to 100% of Project amount including the required down payment by the Government

Repayment term - up to 12 years starting 6 month after completion of the project

Interest rate - A floating rate of 6 months LIBOR plus a margin of 1.75%-2.25%

Together we  
can make a  
positive  
change

*AnyWay*<sup>TM</sup>



**Pleion** Inc.

